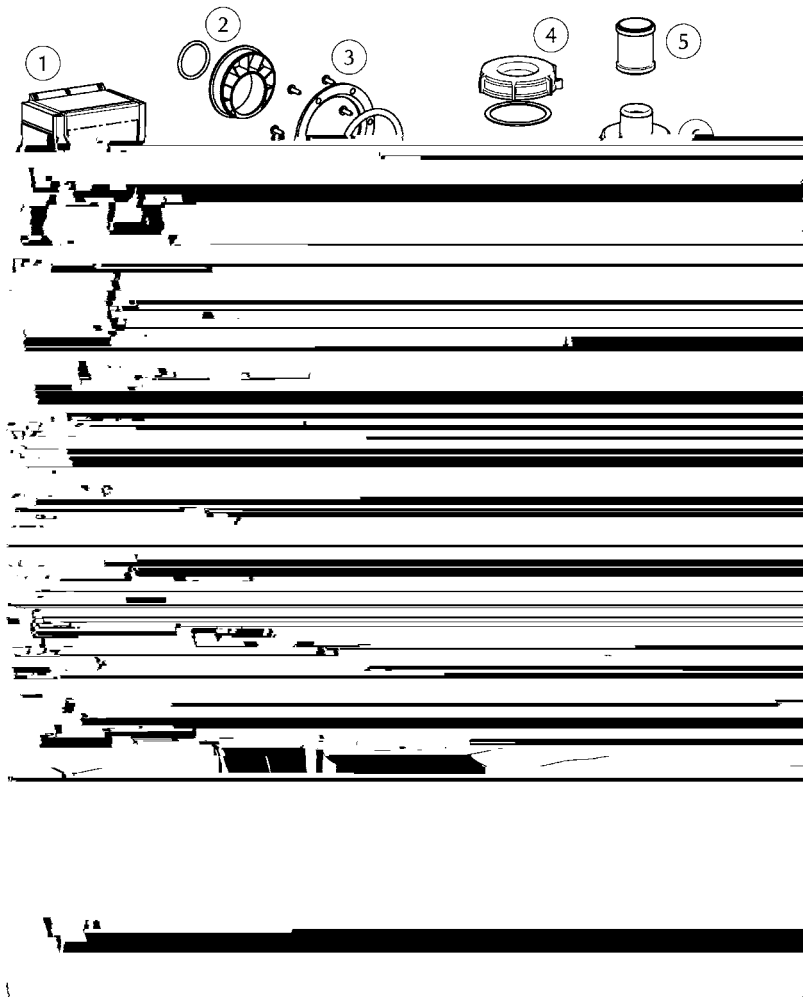


# COMPLI 500

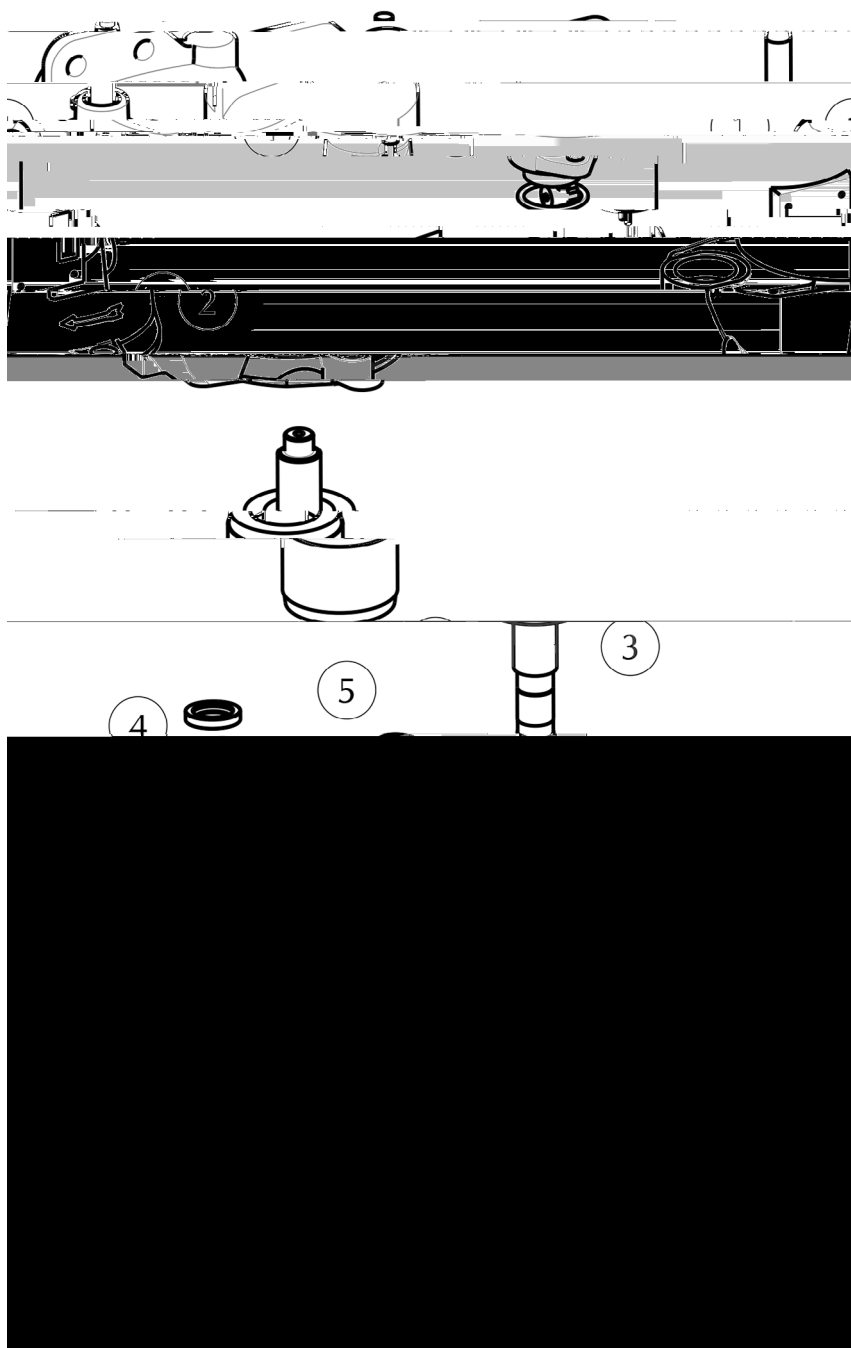
Ersatzteile - Spare parts - Pièces de rechange - Reserveonderdelen - Parti di ricambio - Reservedele - Reserv



①	Steuerung	Control unit	
	510/4, 515/4		JP45788
	525/2, 525/4		JP45789
	535/2		JP45790
②	DN150 / DN100	DN 150 / DN100	JP48871
③			JP43713
④			JP42798
⑤			JP47287
⑥			JP44860
⑦			
	510/4, 515/4		JP46839
	525/2, 525/4		JP47717
	535/2		JP47303
⑧			JP43712
⑨			JP43710
⑩			JP43709
⑪			
	510/4		JP45778
	515/4		JP45779
	525/4		JP45780
	525/2		JP45781
	535/2		JP45782
⑫			JP43705
⑬			JP43711
⑭			JP43706
⑮			JP47966
⑯			JP43707



①	Steuerung	Control unit	
	1010/4 BWE		JP47285
	1010/4, 1015/4		JP47286
	1025/4, 1025/2		JP45786
	1035/2		JP45787
②	DN 150 / DN 100	DN150 / DN 100	JP48871
③			JP43713
④			JP42798
⑤			JP47287
⑥			JP44861
⑦			JP47304
⑧			
	4 m Leitung		JP43712
	15 m Leitung		JP48227
⑨			JP43710
⑩			JP43709
⑪			
	1010/4 BWE, 4 m		JP46754
	1010/4 BWE, 15 m		JP48684
	1010/4		JP45778
	1015/4		JP45779
	1025/4		JP45780
	1025/2		JP45781
	1035/2		JP45782
⑫			JP43705
⑬			



①	Leitung	Cable	
	10/4, 15/4, 25/4		<b>JP43717</b>
	1010/4 BWE, 4 m		<b>JP43721</b>
	1010/4 BWE, 15 m		<b>JP48685</b>
②	Stator + Gehäuse	Stator + Housing	
	10/4, 15/4, 25/4		<b>JP47042</b>
	1010/4 BWE		<b>JP43722</b>
③	Rotorwelle	Rotor shaft	
	10/4, 15/4, 25/4		<b>JP45791</b>
	1010/4 BWE		<b>JP46801</b>
④	Motorabdichtung	Motor seals	<b>JP46806</b>
⑤	Lauf radbefestigung	Impeller fixation	
	10/4, 15/4, 25/4		<b>JP46802</b>
	1010/4 BWE		<b>JP46803</b>
⑥	Lagersatz	Bearing set	<b>JP46724</b>
⑦	Lagerschild	Bearing housing	<b>JP43720</b>
⑧	Dichtungssatz	Seal set	<b>JP46807</b>
⑨	Lauf rad	Impeller	
	1010/4 BWE		<b>JP47290</b>
	10/4		<b>JP45793</b>
	15/4		<b>JP45794</b>
	25/4		<b>JP45795</b>
⑩	Schraubensatz	Screw set	<b>JP47291</b>

